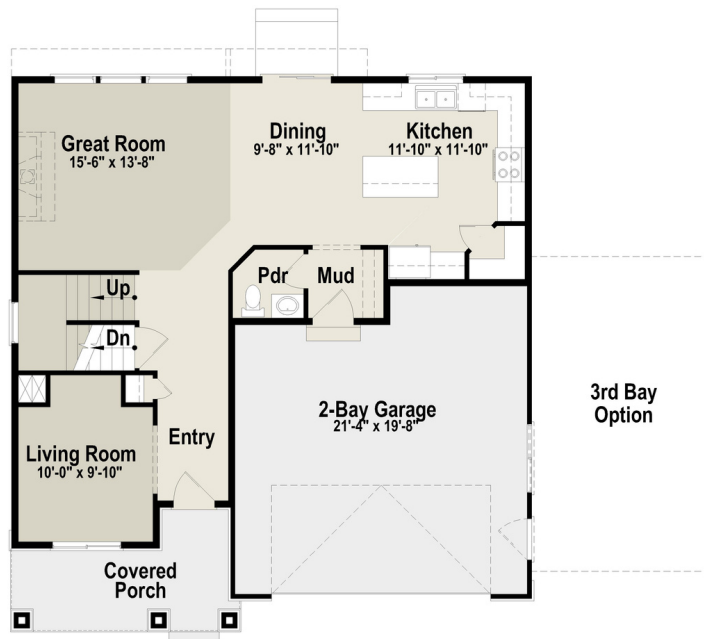
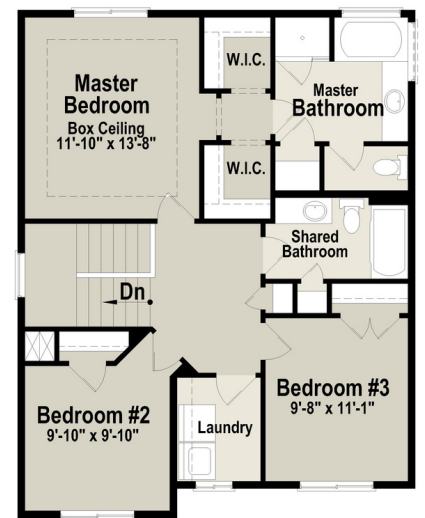




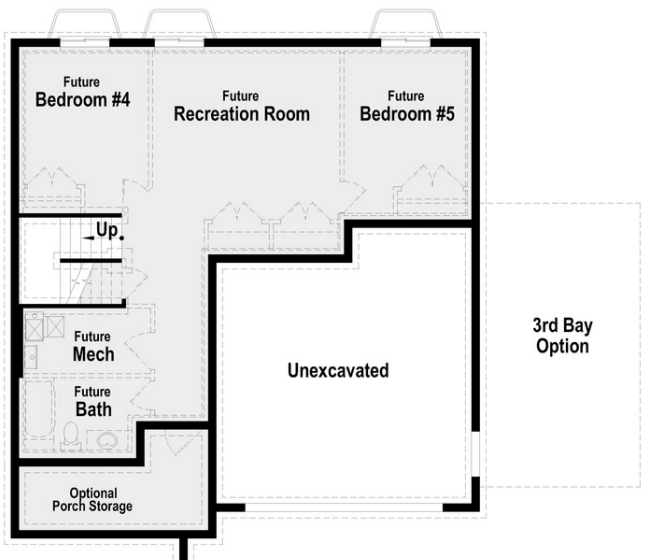
SARAH SINGLE FAMILY 2-STORY



Sarah Main Floor Plan



Sarah Second Floor Plan



Sarah Basement Floor Plan

3rd Bay Option

3rd Bay Option

HOME INFO

MAIN FLOOR: 909 sq ft
2ND FLOOR: 836 sq ft
BASEMENT: 913 sq ft

TOTAL FINISHED: 1,745 sq ft
TOTAL: 2,658 sq ft

BED: 3
BATH: 2.5